

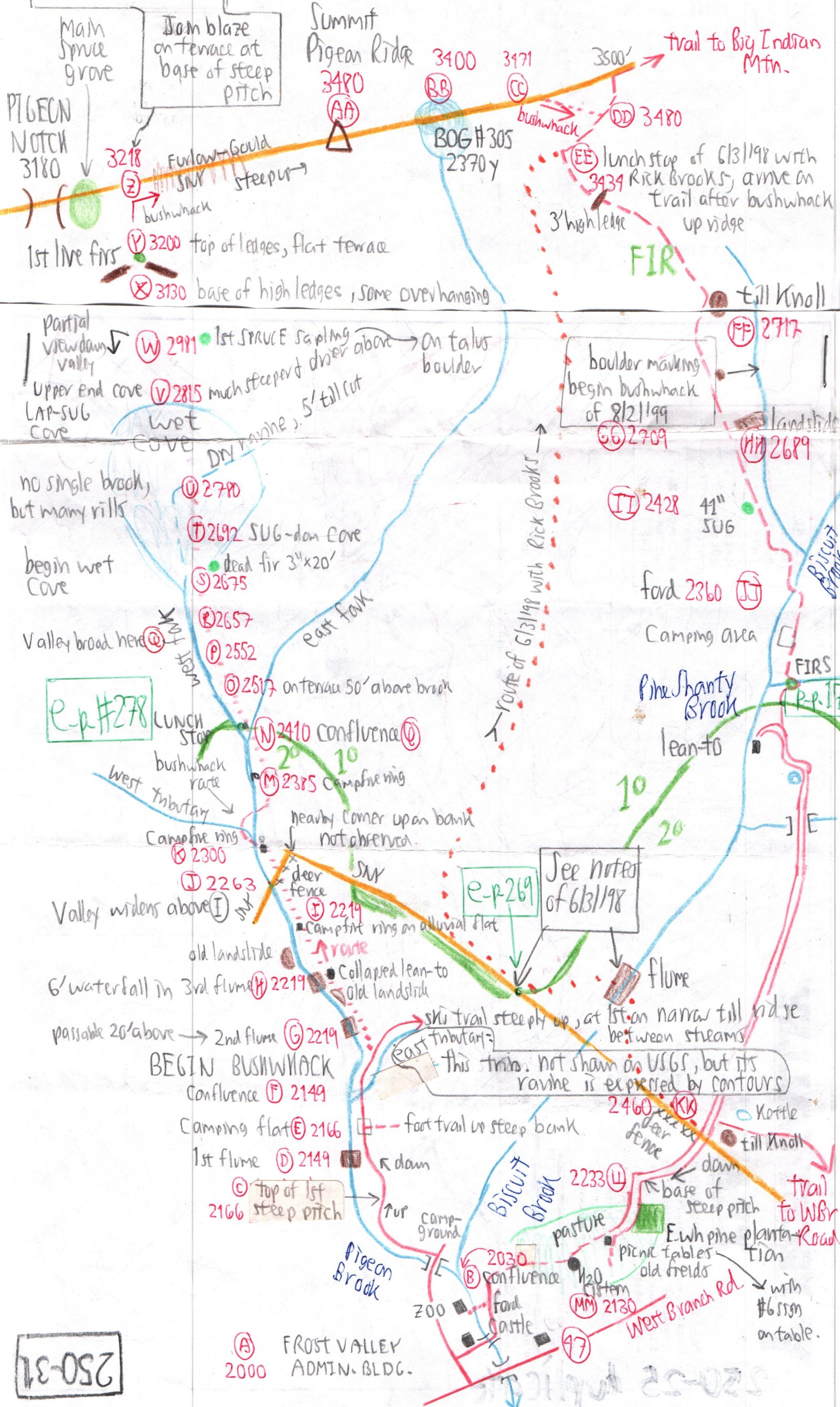
Point	Site 8/7/99	p	Δp	Δe	e calc	e map	time	R
A	Frost Valley Admin	29.87	0.00	—	—	2000	±9:30	Pigeon Notch from Frost Valley
B	Confluence, B & P #	29.80	0.07	61	2061	2030	9:40	
C	top steep pitch	29.68	0.19	166	2166			Biscuit Pigeon Brooks 250-30
D	flume, 1st	29.70	0.17	149	2149			
E	Camping flat	29.68	0.19	166	2166			
F	Tnb from E, end road	29.65	0.22	193	2193	2160	10:15	$\frac{3480-2000}{29.87-29.18}$
G	2nd flume	29.62	0.25	219	2219			
H	3rd with falls	29.62	0.25	219	2219			
I	collapsed lean to	29.62	0.25	219	2219			$\frac{1480'}{1.69''}$
J	blaze SNY	29.57	0.30	263	2263		10:47	
K	Tnb. from W	29.54	0.33	289	2289	2300	11:05	
L		29.48	0.39	342	2342			
M		29.43	0.44	385	2385			$= 0.876$
N-Q	forks, lunch stop begin 1 ^o certain	29.43	0.44	385	2385	2410	11:43 to 12:16	
O		29.28	0.59	517	2517			
P		29.24	0.63	552	2552			
R		29.12	0.75	657	2657			
S	dead fir, one springs	29.10	0.77	675	2675			
T	SUG wet cove	28.98	0.79	692	2692		1:30	
U	S ravine from NE	28.98	0.89	780	2780			
V	Upper end of cove	28.94	0.93	815	2815	2900		
W	1st SR sapling	28.75	1.12	981	2981		2:00	
X	base of ledges	28.58	1.29	1130	3130		2:09	
Y	Top of ledges	28.50	1.37	1200	3200	±3200	2:25	
Z	on blaze, E of Pigeon Notch	28.48	1.39	1218	3218		2:36 to 2:46	
AA	Pigeon Ridge	28.18	1.69	1480	3480	3480	3:10	
			1.59	1480	3480			
BB	bag, covered in 1995	28.26	1.51	1406	3406	3400	3:15	$r=0.931$ $p=29.77$ at Frost Valley
CC		28.19	1.58	1471	3471			
DD	on trail	28.18	1.59	1480	3480			
EE	Trail bends 90° *	28.23	1.54	1434	3434		3:37	* Where Rick Brooks & MK joined trail on 6/31/98
FF	Knob of till	29.00	0.77	717	2717			‡ begin 1 ^o hemlock grove exploration on 8/21/99
GG	bushwhack boulder ‡	29.01	0.76	708	2708			
HH	landslide top	29.03	0.74	689	2689			
II	41" SUG	29.31	0.46	428	2428			
JJ	ford Biscuit Brook	29.40	0.37	344	2344	2360	4:43	(Continued)

KK	Jc. at Frost Valley blaze & blue trail	29-31	0.46	428	2428	2460	5:33	3480-2000
LL	road turns SW to base of steep pitch	29-52	0.25	233	2233			29.77-21.48
MM	water supply system	29-63	0.14	130	2130			= $\frac{1480}{1.59} = 0.931$
A	OUT	29.77	0	—	—	2000	6:06	=

250-31

Spruce Grove:
 From a lookout along the blaze above ②, the slopes of Doubletop have scat. FIR, not SPRUCE. A few scat. (SIR OR FIR or both?) to NE side of col. NO more SPRUCE above this point on knob 3480'

Main spruce grove & Notch were missed. ② is 48 ft above on E.



250-31

① FROST VALLEY ADMIN. BLDG. 2000

West Branch Rd. with #6 iron on table.

Site	Trees	Shrubs	Herbs	History	
					250-32
					Geology & Soils
(C)	HEM-B-YB-SUG; HEM ^{can} _{Common}	ILIX MONT ✓			(D) Flume on ledge
(D)					
(E)	HEM scat				
(F)				Ent bank road? (F)	
(G)	HEM to 12"			<u>NO</u> roads (G)	(G) 2nd flume on ledge
(H)			DP dam on slide on east Imp dam on slide on west	deer trail dis-continuous	(H) 3rd flume & 6' high falls Landslides
(I)	ASN 24"				
(J)	NO change in forest, 2nd big ± 24" ASN at meander		ASN seedling		
(K)	Bigtooth, 1 ASN, 2nd Bigtooth. HEM scat to 12" 2nd ASN to 8". 3rd ASN is Twin.	KAMAM ✓	CB	No stumps, No roads, but No huge trees either over 16"	
(L)	Triple-trunk ash	ILIX MONT ✓			
(M)	10" HEM; double trunk 18" 18" ASN, Two 24" YB. on E bank				
(N)	RM-YB-B-HEM - One 20" ASN not much SUG	MM MO VA	Mitch, CB, LL Street, \$	The occurrence of larger trees begins about here - fragment ∴ 10	(N) Stream flow nearly equal on 2 forks.
(O)	B dam, one 28" BC, one 28" HEM	VA			
(P)	12" ASN down, 28" SUG				
(R)	one 28" ASN, SUG & YB to 24" & scat.				
(S)	dead FIR 1st 3' x 20' in wet → SUG-YB Cove begins 30" ASN; 16" ASN widely scattered		IMP LAP, OTHELYP, VV		(S) Cove begins
(T)	Cove SUG dam to 24"	ILIX MONT ✓	Heracleum		(T) Streams become springs & are no longer easy to follow in distinct channels
(U)	SUG to 28", 1 HEM 24"				(U) Dry rill 5' deep, cove drier
(V)	SUG dam		LAP, CAULD, RLAC	(V) Upper end of cove springs heads see per above	

<p>(W)</p> <p>(X)</p> <p>(Y)</p> <p>(Z)</p>	<p>1st SPR sapling on tall boulder, 3' x 1 1/2" with broken top. SUB still 24"</p> <p>SORS seedling SUB still DOM</p> <p>2' high FIR, FIR 6" SCOT Scot Spruce to 60", Scot SUB</p> <p>See note in green box on sketch map about spruce</p>	<p>MM</p>	<p>Local Polypody, LAP & RS wilted</p>	<p>Cleavert visible from partial lookout to east side of W Br Newcomb, i.e., other side of Frost Valley</p> <p>on blaze (Z)</p>	<p>(W) talus</p> <p>(X) overhanging ledges - magnificent walk</p> <p>(Y) ledges top</p>
<p>(CC)</p>	<p>30'-high canopy on narrow crest</p>		<p>Chelone deer-browsed on VV terrace</p>		
<p>(EE)</p>	<p>Just below 3' high ledge is YB with a FIR growing in a crotch</p>				
<p>(JJ)</p>	<p>4 YBs & some SUB to 30"</p>			<p>10 at ford</p>	
<p>PINE SHANTY BROOK</p>	<p>24" NEM, 36" YB by lowest fir pair</p>	<p>Ilex mont</p>	<p>SM</p>		
<p>(KK)</p>				<p>Stumps with bark off on Frost Valley land, 20 to 35y maybe</p>	
<p>(LL)</p>			<p>Sparganium tomentosum in dry field</p>		